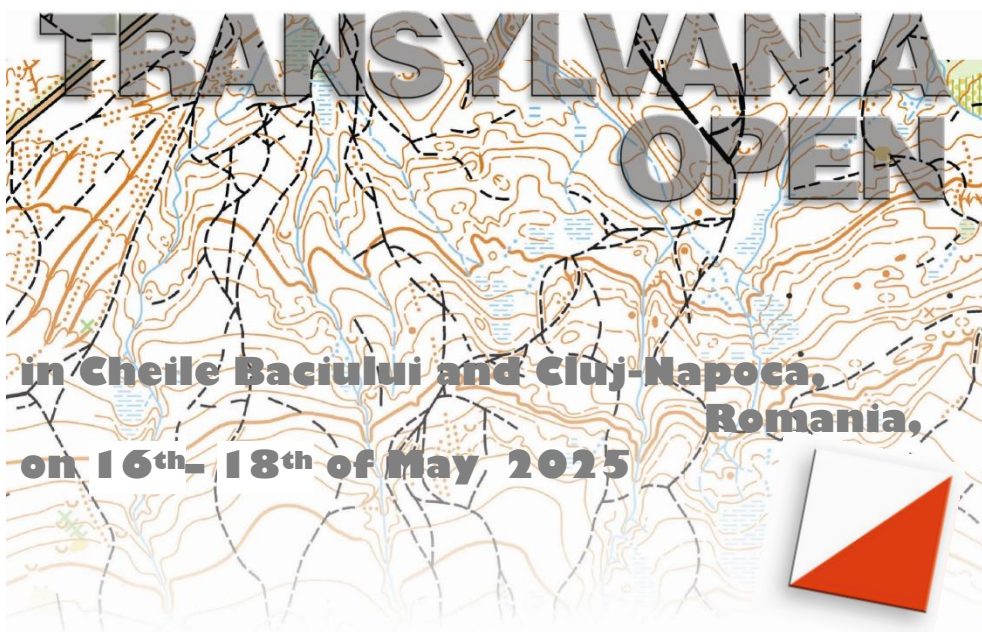


**Romanian Orienteering Federation
Cluj County Youth and Sport Directorate
Transilva S.C.**

Welcome you to



Event programme:

- | | |
|---|--|
| Friday, 16 th of May, 13:00 h: | - first start in the Middle Distance race:
Transylvania Open – race 1 |
| Saturday, 17 th of May, 11:00 h: | - first start in the Long Distance race:
Transylvania Open – race 2 |
| Sunday, 18 th of May, 09:30 h: | - first start in the Sprint Distance race:
Transylvania Open – race 3 |
| Sunday, 18 th of May, 12:00 h: | - prize-giving ceremony Transylvania Open |

Registration - event secretariat (finish area):

- | | |
|--|-------------------------|
| Friday, 16 th of May, 10-13 h | (GPS: 46.7796, 23.5133) |
| Saturday, 17 th of May, 08-10 h | (GPS: 46.7796, 23.5133) |
| Sunday, 18 th of May, 08-09 h | (GPS: 46.7498, 23.5569) |

Attention!

- Users of Romanian National Roads must buy vignette called “**Rovinieta**”. Please visit www.roviniete.ro for more information. Crossing the Romanian state-border you can buy it at filling stations, via SMS (Orange, Vodafone Digi Mobil: call-number 7500) or online (www.roviniete.ro). In case of a passenger car the minimum period is 7 days and costs 3 €.

Event centre: Each day is situated close to the Parking area. Distances, GPS coordinates appear at Technical Data. **Access to the events:** look at the map on www.transilva.ro.

On the race 1(MD) + race 2 (LD) **access** to the Event Center is via the paved road, from the center of Baciú (GPS intersection **46.7969, 23.5180**) towards Halta Baciú, respectively from the edge of Baciú (GPS intersection **46.7855, 23.5359**) via on partially unpaved road, but shorter for those arriving from Cluj-Napoca.

On the race 3 (see the image bellow) **access** to the Event Center (EC) is from **Mehedinți street no. 74** (marked parking **P1**). Parking **P2** has the barrier open on Sunday. Free parking spaces can still be found on **Mehedinți street**. If necessary, you can also park in the undeveloped park **P3**, which can be reached from Bucegi street through **Tazlău alley**.

Keeping clean is mandatory. Please take your trash.
Smoking and lighting a fire is FORBIDDEN in all area connected with the competition.

Terrain:

Hilly, many contour details; steep valleys, deciduous and coniferous forests, open lands; variable runnability and visibility.

Clothing for all races:

Due to high stinging nettle and other vegetation, whole body covered clothing is recommended. Protection against **ticks** and **mosquitoes** is recommended. Tick-borne Encephalitis vaccination is recommended.

Maps: Take care at the scale! The scale of the maps:

- | | |
|--------------------|---------------------|
| Race 1 (MD) | 1: 7.500/5m |
| Race 2 (LD) | 1: 10.000/5m |

Those, who have **1: 7.500/5m** scale are specified at **Technical Data**.

- | | |
|------------------------|--------------------|
| Race 3 (Sprint) | 1: 4.000/2m |
|------------------------|--------------------|

Each day the maps are printed on waterproof paper. They have **A4** format.

The **control descriptions** are printed on the map. **Additional control descriptions** are available at start area.

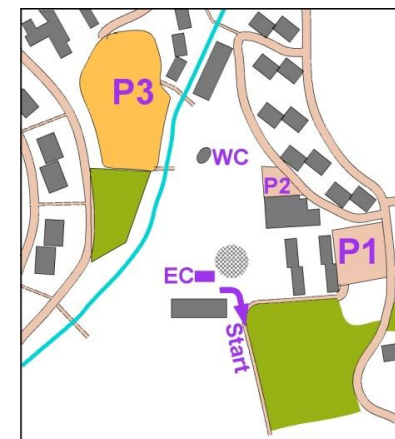
Control system: The electronic SportIdent **AIR+** system is used. There is confetti at each control, in order to mark the place if the electronic device disappears.

Additional Marked routes:

The courses for the 10 years categories have **white-red** (plastic) marked routes.

There is no marking in the Sprint race.

There are **white-blue** (plastic) markings from the „**Event center**” (EC) to the „**Start**”.



Refreshment points: only in the Finish. There are no refreshments at the „Start” area.

On the race **LD** water is provided in place marked on the **control description**.

No buffet and no showers in the Event Centre area.

First aid: only in the Event Centre area.

Toilets: There will be toilets next to the **Event Centre area** in the MD+LD races. The toilets of the Sport Base (marked with WC on the image above) are used during the Sprint race.

Start procedure: The start-lists and additional control descriptions will be available in the start area. The organizers don't provide materials for the competitors to fix the control descriptions. The organizers don't provide the transport of the clothes and bags from the “Start” to the “Event Centre” area.

Check-in to the Start: Competitors must check-in two minutes before their start time. There are consecutive start boxes. The runner reports oneself when the first box event's clock shows his start-time from the start-list. In the first box (1 minute) the organizer will verify the number of SI-card and the start-time, the runner makes the **CLEAR** and **CHECK** operations of the SI-card. SIAC activation is done through **CHECK**. The activation verification is done through **SIAC Test**.

The **start time** is given by the **START** station device, when the competitor puts in his/her SI-card. The map is picked up by the competitor after the **START**. The competitor is responsible for picking up the right map for his/her category. It is mandatory to follow the marked route to the start point which is indicated by a control flag on the terrain and by the triangle on the map.

Finish area: Introducing the SI-card in **FINISH** station is required. SI-card reading is in Event Centre. From the „Finish” to the officials' desk to download the SI-card, competitors will walk. Don't leave the officials' desk if there is any unresolved problem. Competition maps will be not collected after the races. Please, respect **FAIR PLAY**!

All runners are required to download the SI-card in Event Centre even if they did not finish the course, otherwise they will support the cost of seeking action.

QUARANTINE for the Sprint race:

Start Quarantine closes at 09:15. The Event Center must be left at 09:00 at the latest.

Finish Quarantine is completed at 11:00.

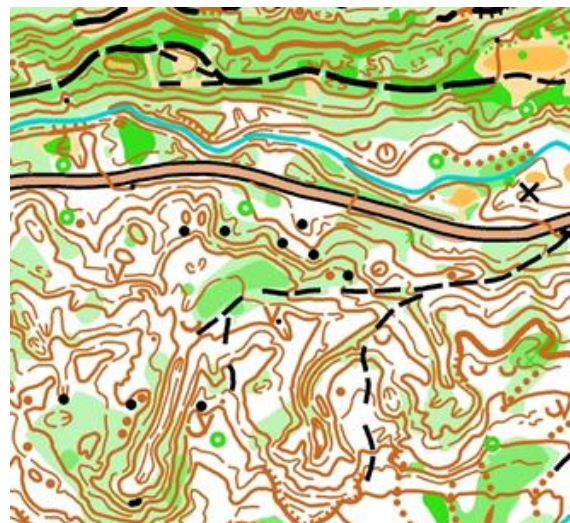
Removing of controls begins at:

MD: **16:00** ; LD : **15:00** ; Sprint : **11:30**

Prize-giving Ceremony in the Finish area:

Sunday, 18th of May, **12:00 h**

- For the first three placed runners in **Transylvania Open 2025 -ed. 24** (combined time results of 3 days) - prizes from **TranSilva Sport Club**.
- The children who complete the M10,W10 or Family race will receive the same prize



www.transilva.ro

www.orienteeing.ro

www.fro.ro

Competitors take part in the competition on their own responsibility.
Medical insurance is the competitors' responsibility.

All competitors accept the rules and responsibilities specified in this Bulletin with their registration.