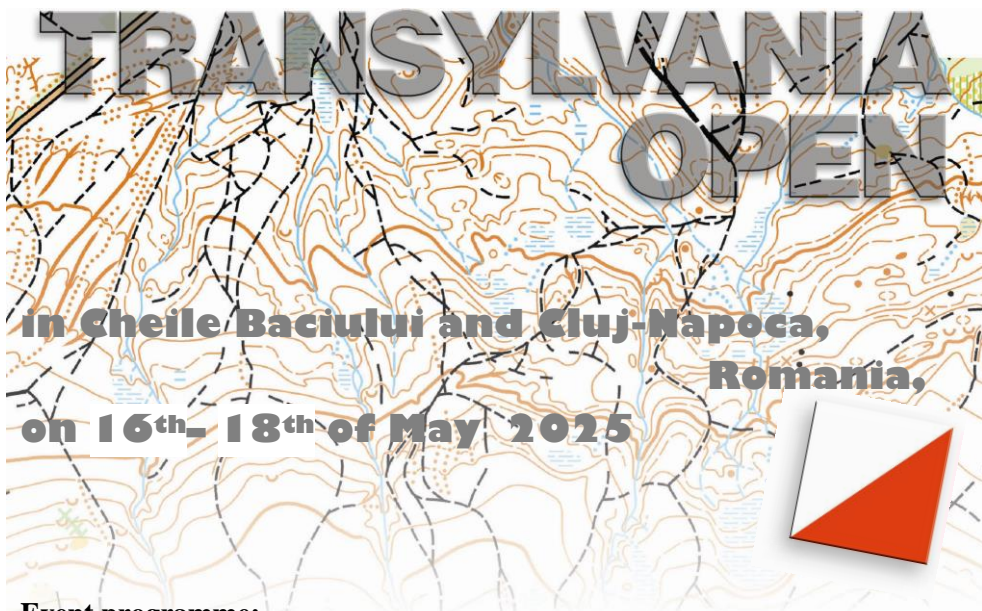


**Romanian Orienteering Federation
Cluj County Youth and Sport Directorate
and TranSilva S.C.**

Hereby invites You to



Event programme:

- | | |
|---|--|
| Friday, 16 th of May, 13:00 h: | - first start in the Middle Distance race:
Transylvania Open – race 1 |
| Saturday, 17 th of May, 11:00 h: | - first start in the Long Distance race:
Transylvania Open – race 2 |
| Sunday, 18 th of May, 09:30 h: | - first start in the Sprint Distance race:
Transylvania Open – race 3 |
| Sunday, 18 th of May, 12:00 h: | - prize-giving ceremony Transylvania Open |



Registration - event secretariat (finish area):

- | | | |
|-----------|--------------------------|----------------|
| Friday, | 16 th of May, | 11-13 h |
| Saturday, | 17 th of May, | 08-10 h |
| Sunday, | 18 th of May, | 08-09 h |

Terrain: Hilly, many contour details, deciduous forests, open and semiopen lands; variable runnability and visibility

Maps: Terrains marked on attached map are embargoed areas for competitors. Maps completely redone based on lidar measurements.

Punch system: Sport Ident AIR+

Classes, results, prizes:

Transylvania Open 2025, ed.24:

MW12, 14, 16, 18, 20, 21E, 35, 40, 45, 50, 55, 60, 65, 70, 75; M80+
MW-OPT (Technical Open), MW-Open (Open beginner),
MW10 (marked routes), **Family** (MW10 with companion)



The organizer will merge the categories with few participants.

Prizes:

- For the first three placed runners in **Transylvania Open** (combined time results of races1 + races2 + races3) - prizes from **TranSilva Sport Club**
- The children who complete the M10,W10 or Family race will receive the same prize

Entries: Please use [Online entries](#) or use the the following **e-mail:** transilva@gmi.ro with [entry form](#) from www.transilva.ro website.

Deadline for online entries: 9th of May 2025

Entry fee for all individual races:

MW10, 12, 14; Family, MW-Open
MW16, 18; MW65, 70, 75; M80+;
MW20, 21E, 35, 40, 45, 50, 55, 60; MW-OPT

Normal - until 09.05.2025

15 EUR (5 EUR / day)
20 EUR (8 EUR / day)
25 EUR (10 EUR / day)

Late - after 09.05.2025

20 EUR (8 EUR / day)
25 EUR (11 EUR / day)
30 EUR (13 EUR / day)

MW10, 12, 14; Family, MW-Open
MW16, 18; MW65, 70, 75; M80+;
MW20, 21E, 35, 40, 45, 50, 55, 60; MW-OPT

rent **SI-Card**

3 EUR (1 EUR /day)

Entry fee payment:

- Bank transfer in Euro, **before 12th of May 2025**, to
Club Sportiv TranSilva, Cluj-Napoca, str. Observatorului 15/12
SWIFT: BTRLRO22, IBAN: RO09 BTRL EURC RT06 2462 0201–
Banca Transilvania S.A.
- The entry fee is payable in cash (16th – 18th of May 2025)

Accommodation and Local transportation: on runners own responsibility !

Additional **informations** on website www.transilva.ro ,
e-mail: transilva@gmi.ro

Access to the events: *See the enclosed draft*

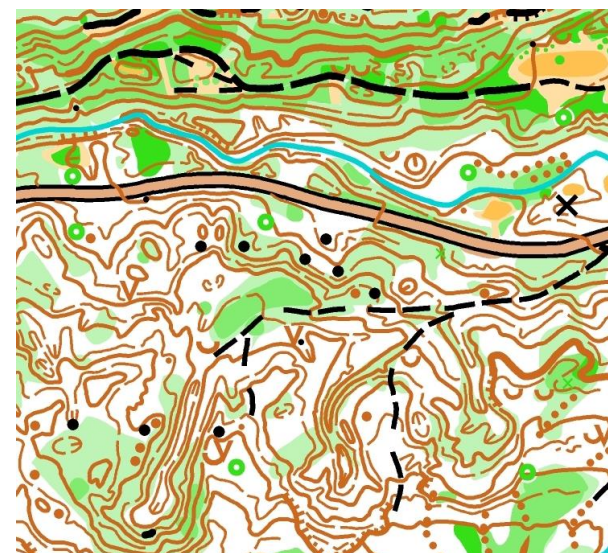


Everybody attends the competition on their own risk.

We kindly ask everyone to minimise our ecological footprints.

Please don't leave any trash!

WE ARE LOOKING FORWARD TO SEE YOU COMPETE IN CLUJ COUNTY



PRIMĂRIA ȘI CONSILIUL LOCAL
CLUJ-NAPOCA



VISIT CLUJ
The Heart of Transylvania



www.transilva.ro

www.orienteering.ro

www.fro.ro