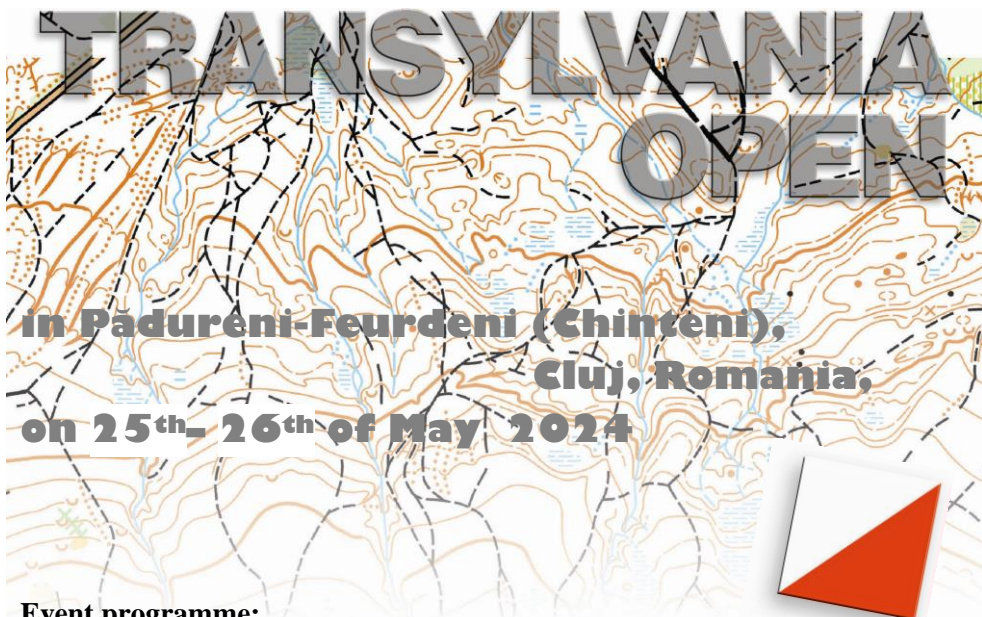


**Romanian Orienteering Federation
Cluj County Youth and Sport Directorate
and TranSilva S.C.**

Hereby invites You to



Event programme:

- Saturday, 25th of May, 11 h: - first start in the **Middle Distance** race:
Transylvania Open – race 1,
Sunday, 26th of May, 10 h: - first start in the **Long Distance** race:
Transylvania Open – race 2.
Sunday, 26th of May, 13:30 h: - prize-giving ceremony **Transylvania Open**



Registration - event secretariat (finish area):

Saturday,	25 th of May,	09-11 h
Sunday,	26 th of May,	08-09 h

Terrain: Hilly, many contour details, deciduous forests, open and semiopen lands; variable runnability and visibility

Maps: It is a completely new area where no orienteering competition has ever been held. It is a vicinity of the *Fânațele Clujului* botanical reservation.

Punch system: Sport Ident AIR+

Classes, results, prizes:

Transylvania Open 2024, ed.23:

MW12, 14, 16, 18, 20, 21E, 35, 40, 45, 50, 55, 60, 65, 70, 75; M80+

MWOPT (Technical Open), MWOpen (Open beginner),

MW10 (marked routes), **Family** (MW10 with companion)

The organizer will merge the categories with few participants.



Prizes:

- For the first three placed runners in **Transylvania Open** (combined time results of 2 individual races) - prizes from **TranSilva Sport Club**

Entries: Please use [Online entries](#) or use the the following *e-mail*: transilva@gmi.ro with [entry form](#) from www.transilva.ro website.

Deadline for online entries: 17th of May 2024

Entry fee for all individual races:

MW10, 12, 14; Family, MWOpen
MW16, 18; MW65, 70, 75; M80+;
MW20, 21E, 35, 40, 45, 50, 55, 60; MWOPT

Normal - until 17.05.2024

10 EUR (5 EUR / day)
15 EUR (8 EUR / day)
20 EUR (10 EUR / day)

Late - after 17.05.2024

15 EUR (8 EUR / day)
20 EUR (11 EUR / day)
25 EUR (13 EUR / day)

rent SI-Card

2 EUR (1 EUR /day)

Entry fee payment:

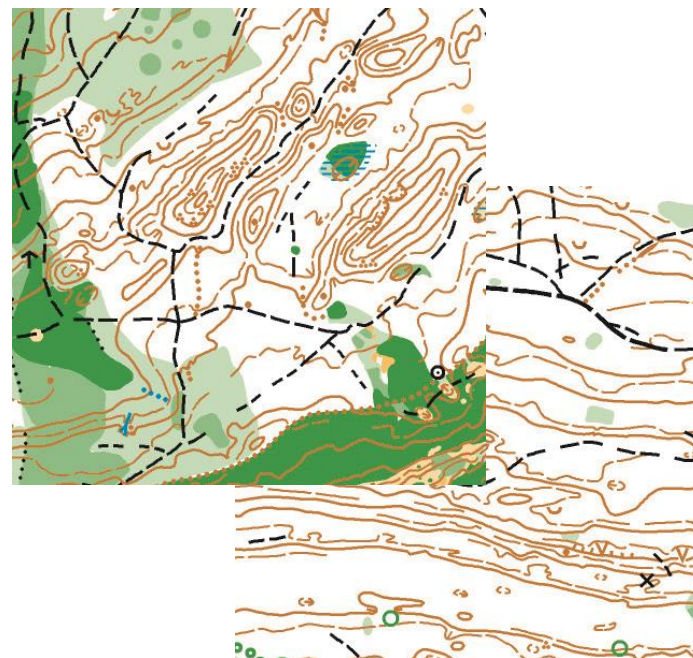
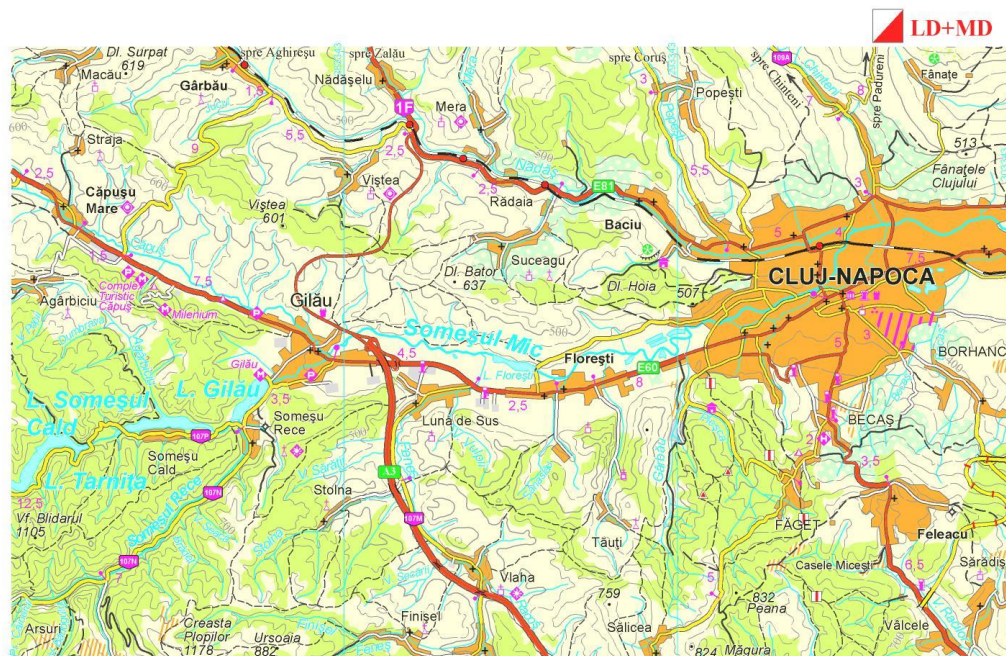
- Bank transfer in Euro, **before 21th of May 2024**, to
Club Sportiv TranSilva, Cluj-Napoca, str. Observatorului 15/12
SWIFT: OTPVROBU, IBAN: RO53 OTPV 2010 0087 5253 EU01 –
OTP Bank Romania S.A.
- The **entry fee** is payable in cash (25th – 26th of May 2024)



Accommodation and Local transportation: on runners own responsibility !

Additional **informations** on website www.transilva.ro ,
e-mail: transilva@gmi.ro

Access to the events: *See the enclosed draft*



Everybody attends the competition on their own risk.

We kindly ask everyone to minimise our ecological footprints.

Please don't leave any trash!

WE ARE LOOKING FORWARD TO SEE YOU COMPETE IN CLUJ COUNTY



www.transilva.ro

www.orienteering.ro

www.fro.ro

