

**Romanian Orienteering Federation  
Cluj County Youth and Sport Directorate  
and Transilva S.C.**

**Hereby invites You to**



**Event programme:**

- Friday, 16<sup>th</sup> of July, 11 h: - first start in the **Middle Distance** race:  
**Transylvania Open** – race 1,  
Saturday, 17<sup>th</sup> of July, 10 h: - first start in the **Long Distance** race:  
**Transylvania Open** – race 2,  
Sunday, 18<sup>th</sup> of July, 10 h: - first start in the **Middle Distance** race:  
**Transylvania Open** – race 3.  
Sunday, 18<sup>th</sup> of July, 13:30 h: - prize-giving ceremony **Transylvania Open**



**Registration** - event secretariat (finish area):

- Friday, 16<sup>th</sup> of July, 09-11 h  
Saturday, 17<sup>th</sup> of July, 08-10 h  
Sunday, 18<sup>th</sup> of July, 08-10 h

**Terrain:** Hilly, many contour details, deciduous forests, open and semiopen lands; variable runnability and visibility

**Maps:** *Terrains marked on attached map are embargoed areas for competitors.*

**Punch system:** Sport Ident

**Classes, results, prizes:**

**Transylvania Open 2021, ed.20** (races 1 + 2 + 3):

MW12, 14, 16, 18, 20, 21E, 35, 40, 45, 50, 55, 60, 65; M70, 75, 80, 85+  
MW10 (marked routes), **Open** (Open beginner),  
**OPT** (Technical Open), **OPT-SH** (Short Technical Open)

*The organizer will merge the categories with few participants.*



**Prizes:**

- For the first three placed runners in **Transylvania Open** (combined time results of 3 days) - prizes from **Transilva Sport Club**

**Entries:** Please use [Online entries](#) or use the the following *e-mail*: [transilva@gmi.ro](mailto:transilva@gmi.ro) with [entry form](#) from [www.transilva.ro](http://www.transilva.ro) website.

**Deadline for online entries: 06<sup>th</sup> of July 2021**

**Entry fee for all races:**

MW10, 12, 14; MW65, M70, 75, 80, 85+; **Open** 15 EUR (or 5 EUR 1 day)  
MW16, 18, 20, 21E, 35, 40, 45, 50, 55, 60; OPT, OPT-SH 20 EUR (or 8 EUR 1 day)

**Normal - until 06.07.2021**

MW10, 12, 14; MW65, M70, 75, 80, 85+; **Open** 15 EUR (or 6 EUR 1 day)  
MW16, 18, 20, 21E, 35, 40, 45, 50, 55, 60; OPT, OPT-SH 25 EUR (or 9 EUR 1 day)

**Late - after 06.07.2021**

MW10, 12, 14; MW65, M70, 75, 80, 85+; **Open** 20 EUR (or 7 EUR 1 day)  
MW16, 18, 20, 21E, 35, 40, 45, 50, 55, 60; OPT, OPT-SH 30 EUR (or 10 EUR 1 day)

rent SI-Card

1 EUR /day



### Entry fee payment:

- Bank transfer in Euro, **before 13<sup>th</sup> of July 2021**, to **Club Sportiv Transilva, Cluj-Napoca, str. Observatorului 15/12**  
**SWIFT: OTPVROBU, IBAN: RO53 OTPV 2010 0087 5253 EU01 – OTP Bank Romania S.A.**
- The entry fee is payable in cash (**16<sup>th</sup>-18<sup>th</sup> of July 2021**)

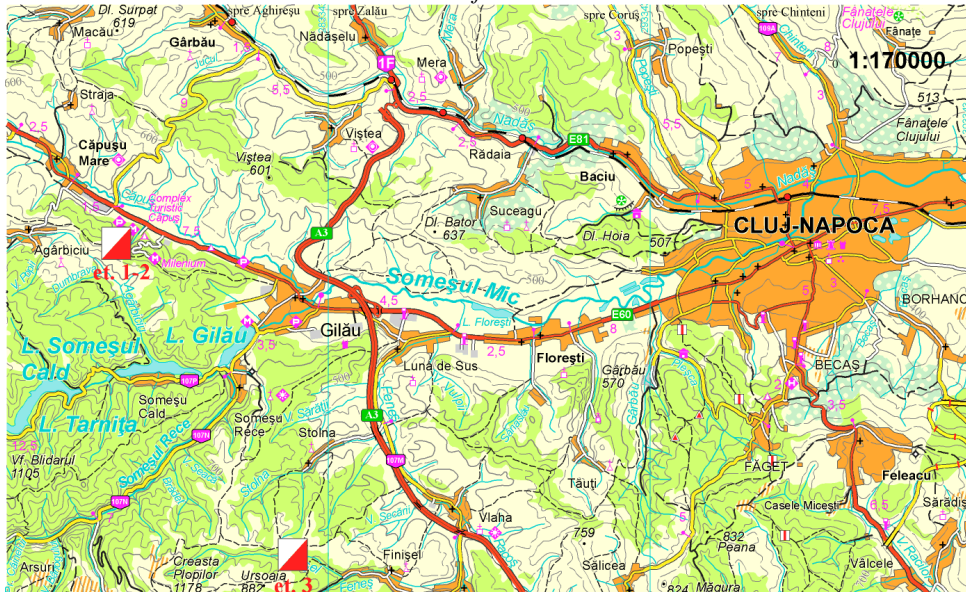


**Accommodation and Local transportation:** on runners own responsibility !

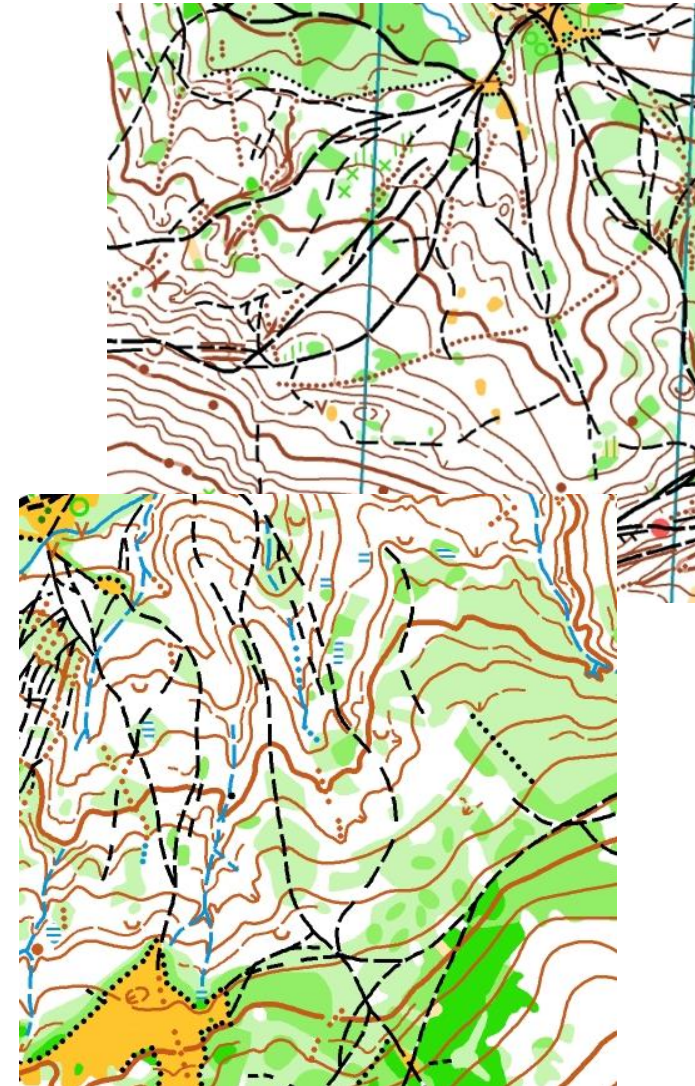
**Warning!** – On 14-18 July 2021 takes place near Cluj-Napoca **Electric Castle** music festival with thousands of participants.

Additional **informations** on website [www.transilva.ro](http://www.transilva.ro) , e-mail: [transilva@gmi.ro](mailto:transilva@gmi.ro)

**Access to the events:** See the enclosed draft



### Participation on runners' own responsibility !



PRIMĂRIA ȘI CONSILIUL LOCAL  
CLUJ-NAPOCA



[www.transilva.ro](http://www.transilva.ro)

[www.orientering.ro](http://www.orientering.ro)

[www.fro.ro](http://www.fro.ro)