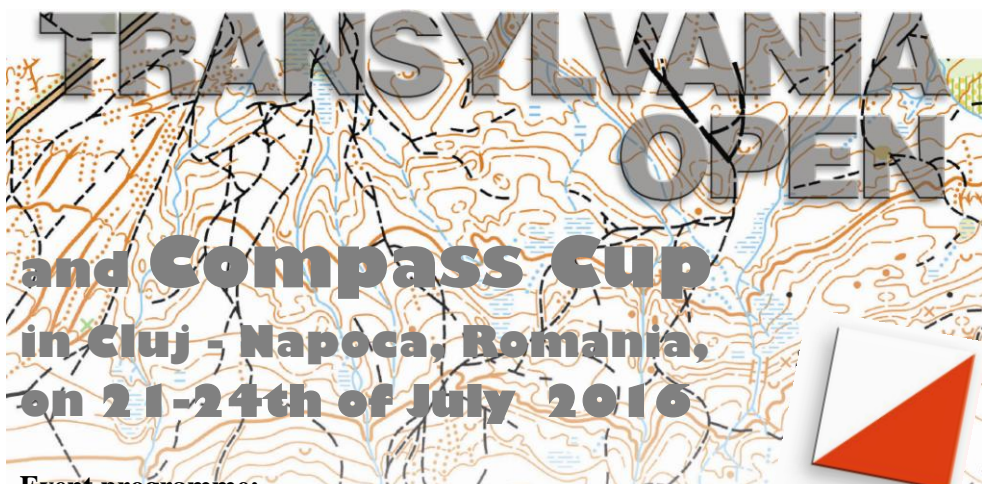


**Romanian Orienteering Federation  
Cluj County Youth and Sport Directorate  
Compass Cluj S.C. and TranSilva S.C.**

**Hereby invites You to**



**Event programme:**

- |                                  |   |
|----------------------------------|---|
| Thursday, 21th of July, 18 h:    | - first start in the <b>Sprint</b> race:<br><b>Transylvania Open</b> - race1,                                 |
| Friday, 22nd of July, 11 h:      | - first start in the <b>Middle Distance</b> race:<br><b>Compass Cup</b> and <b>Transylvania Open</b> – race2, |
| Saturday, 23rd of July, 10:30 h: | - first start in the <b>Long Distance</b> race:<br><b>Transylvania Open</b> – race3,                          |
| Sunday, 24th of July, 10 h:      | - first start in the <b>Middle</b> race:<br><b>Transylvania Open</b> – race4.                                 |
| Sunday, 24th of July, 13:30 h:   | - prize-giving ceremony <b>Compass Cup</b> and<br><b>Transylvania Open</b>                                    |

**Registration** - event secretariat (finish area):

- |           |                       |
|-----------|-----------------------|
| Thursday, | 21th of July, 15-17 h |
| Friday,   | 22nd of July, 09-10 h |
| Saturday, | 23rd of July, 09-10 h |

**Terrain:** Hilly, many contour details, deciduous forests, open and semiopen lands; variable runnability and visibility

**Maps:** *Terrains marked on attached map are embargoed areas for competitors.*



**Punch system: Sport Ident**

**Classes, results, prizes:**

**Compass Cup**, ed.14 (race2) and **Transylvania Open**, ed.15 (race1+race2+race3+race4):

MW12, 14, 16, 18, 20, 21E, 35, 40, 45, 50, 55, 60; 65 M70, 75, 80  
MW10 (marked routes), **Open** (Open beginner),  
**OPT** (Technical Open), **OPT-SH** (Short Technical Open)

**Prizes:**

- For the first three placed runners in **Compass Cup** - prizes from **Compass Cluj Sport Club**
- For the first three placed runners in **Transylvania Open** (combined time results of 4 days) - prizes from **TranSilva Sport Club**



*The organizer will merge the categories with few participants.*

**Entries:** Please use [Online entries](#) or using [entry form](#) from [www.transilva.ro](http://www.transilva.ro) website to the following e-mail: [transilva@gmi.ro](mailto:transilva@gmi.ro).

**Deadline for online entries: 10th of July 2016**

**Entry fee for all days:**

MW10, 12, 14; MW65, M70, 75, 80; Open	<b>Discount - until 01.05.2016</b> 15 EUR (or 5 EUR 1 day)
MW16, 18, 20, 21E, 35, 40, 45, 50, 55, 60; OPT, OPT-SH	25 EUR (or 8 EUR 1 day)

MW10, 12, 14; MW65, M70, 75, 80; Open	<b>Normal - until 10.07.2016</b> 20 EUR (or 6 EUR 1 day)
MW16, 18, 20, 21E, 35, 40, 45, 50, 55, 60; OPT, OPT-SH	30 EUR (or 9 EUR 1 day)

MW10, 12, 14; MW65, M70, 75, 80; Open	<b>Late - after 10.07.2016</b> 25 EUR (or 7 EUR 1 day)
MW16, 18, 20, 21E, 35, 40, 45, 50, 55, 60; OPT, OPT-SH	35 EUR (or 10 EUR 1 day)

rent SI-Card

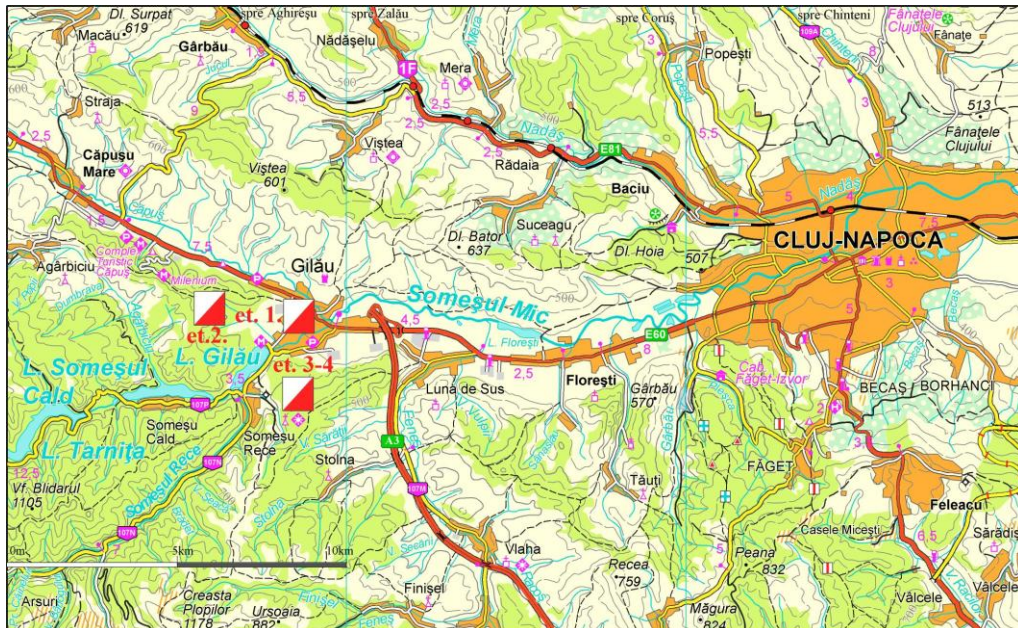
1 EUR /day

**Entry fee payment:**

- Bank transfer in Euro, **before 10th of July 2016**, to  
**Club Sportiv TranSilva, Cluj-Napoca, str. Observatorului 15/12**  
**SWIFT: OTPVROBU, IBAN: RO53 OTPV 2010 0087 5253 EU01 –**  
**OTP Bank Romania S.A.**
- The entry fee is payable in cash (21-24th of July 2016)



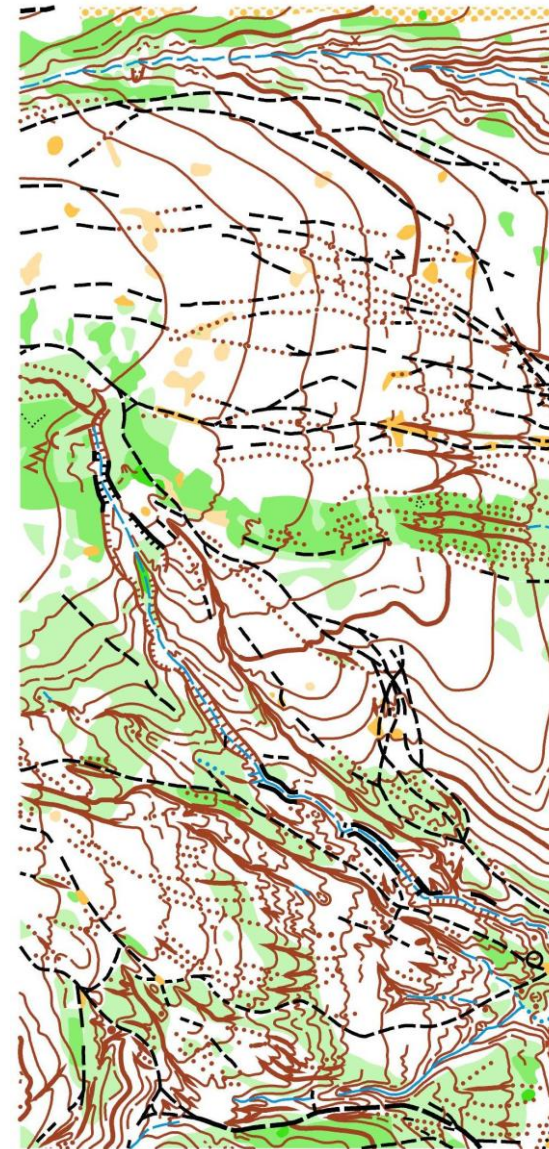
Access to the events: *See the enclosed draft*



**Accommodation and Local transportation:** on runners own responsibility !

Additional **informations** on website [www.transilva.ro](http://www.transilva.ro) , e-mail: [transilva@gmi.ro](mailto:transilva@gmi.ro)

**Participation on runners' own responsibility !**



[www.transilva.ro](http://www.transilva.ro)

[www.compass-cluj.ro](http://www.compass-cluj.ro)

[www.orienteering.ro](http://www.orienteering.ro)